

GAMMA PETROLEUM SERVICES **RIG CONDITION AND ACCEPTANCE SURVEYS**



INCLUDE

- ✓ DRILLING EQUIPMENT
- ✓ WELL CONTROL EQUIPMENT
- ✓ ELECTRICAL EQUIPMENT
- ✓ BARGE EQUIPMENT
- ✓ ENGINE-ROOM EQUIPMENT
- ✓ SAFETY INSPECTION



RIG ACCEPTANCE SURVEYS



Defined as comprehensive assessments by

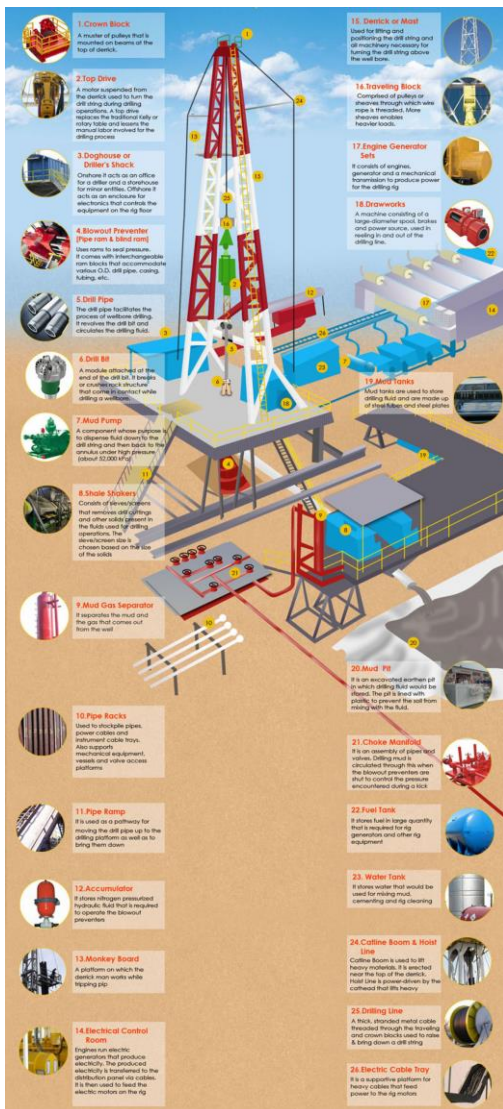
Way of a detailed evaluation of equipment and systems. This inspection will cover an in-depth survey of the state of maintenance of the rig. It includes an inspection of all safety critical elements of the installation and all equipment that could be anticipated to cause operational downtime when a mechanical failure of that equipment occurs.

- The inspection includes, but is not limited to, the opening of critical equipment for verification that the equipment has been kept in a safe and reliable working condition and includes all major items of equipment to ensure a detailed examination of gear teeth, bearings, chains and ancillary parts for excessive wear, damage, cracks and other defects and for the measurements of clearances.
- In addition function testing, pressure testing, load testing and insulation resistance checks for all critical equipment on board the drilling unit, as applicable, will be conducted accompanied by a check that the proper safety devices are installed and are working correctly to prevent accidents and equipment failures.
- The analysis of equipment condition and standards of maintenance is always in accordance with API & IADC standards and includes the equipment manufacturer's specifications and recommendations.

Our detailed independent Rig Acceptance Surveys assess a rig's condition and capability to meet your contract specification and operate within the envelope of your performance criteria.

Applying the same parameters as used in our Rig Condition Surveys, then augmenting them with specific operational testing and integrity verification, we ensure the rig, its equipment (or certain defined equipment) and systems comply to all current and applicable International industry standards.

The scope of the inspection will include: -1



DRILLING EQUIPMENT

Draw Works and Rotary Table Tuggers and Sheaves Well Testing Equipment

Top Drive System Man-Riding Winches Mud Pumps and Mud Agitators

Swivel and Kelly Equipment Survey Line and Ezy-Torq Centrifugal Pumps

Crown Block and Travelling Block Pipe Spinning Wrench Shale Shaker and Mud Cleaner

Hook and Drill String Compensator Pipe Handling Equipment Desilter, Desander and Degasser

Drilling Instrumentation Pipe Racker Mud Mixing System

Derrick/Casing Stabbing Board Iron Roughneck Standpipe Manifold

WELL CONTROL EQUIPMENT

Wellhead Connector Marine Riser Joint (Pins/Boxes)

Ram Type BOP Marine Riser Handling Tools

Annular BOP Diverter Assembly

Flex Joint Diverter Control Console

Marine Riser Adapter Riser Tensioner

Choke and Kill Stabs Guideline Tensioning System

Gate Valve, Failsafe Underwater TV System

Surface Hydraulic BOP Control Unit Choke and Kill Manifold

BOP Control System Choke Remote Control Panel

Marine Riser System BOP Handling Equipment

ELECTRICAL EQUIPMENT

Elmagco Brake AC Motors

Transformers Generators

DC Motors Electrical Safety Regulations



The scope of the inspection will include:-2



BARGE EQUIPMENT

Ballast and Bilge System	Bulk Air System and Tanks
Overflow and Vent Checks	Registration and Classification
Watertight Integrity	Communication Equipment
Mooring System	General Operations

ENGINE-ROOM EQUIPMENT

Diesel Engines	Crane and Power System
Emergency Generator Set	Marine Reduction Gearbox and Propulsion
Watermaker	Thruster Unit
Air Compressor	Preventive Maintenance System

SAFETY INSPECTION

Fire Control System	General Safety Items
Automatic Fire Detection System	Gas Detection System
CO2 System For Fire Control	Helicopter Facilities
Fire Station	Drilling Facilities Safety
Extinguishers & Fire-Fighting Equipment	First-Aid and Sick-Bay
Foam System For Heli-Deck	Emergency Procedures
Survival and Life-Saving	Lifting and Handling
Lifeboat	Living Quarters
Davit-Launched Life-Raft Station	Pollution Control
Escape Routes	Housekeeping

TYPICAL WORKSCOPES INCLUDE ALL THE PARAMETERS OF OUR RIG CONDITION SURVEY WITH DETAILED EMPHASIS ON:

- Function testing, pressure testing, load testing and insulation resistance checks for all critical equipment (pressure lines included) of the unit.
- Structural inspection as well as drilling string and Bottom Hole Assembly inspections are carried out only visually unless agreed upon by the parties.
- Verification of compliance with ISO/API International Standards, Oilfield good practices and other recognized international code of practice.
- Verification of compliance with OPERATORS minimum acceptance standard (i.e. Well Control Policy, BOP and Tubular requirements) and technical Rig Contract specifications (Personnel qualification requirements included).